

FLOOR PLANS

A

- ① Describe your floor plan to your partner.

There is a/an...

There are some / one / two...

It's in the top right / top left / bottom right / bottom left corner.

It's along the top / bottom / left / right wall.

It's in the middle of the room.

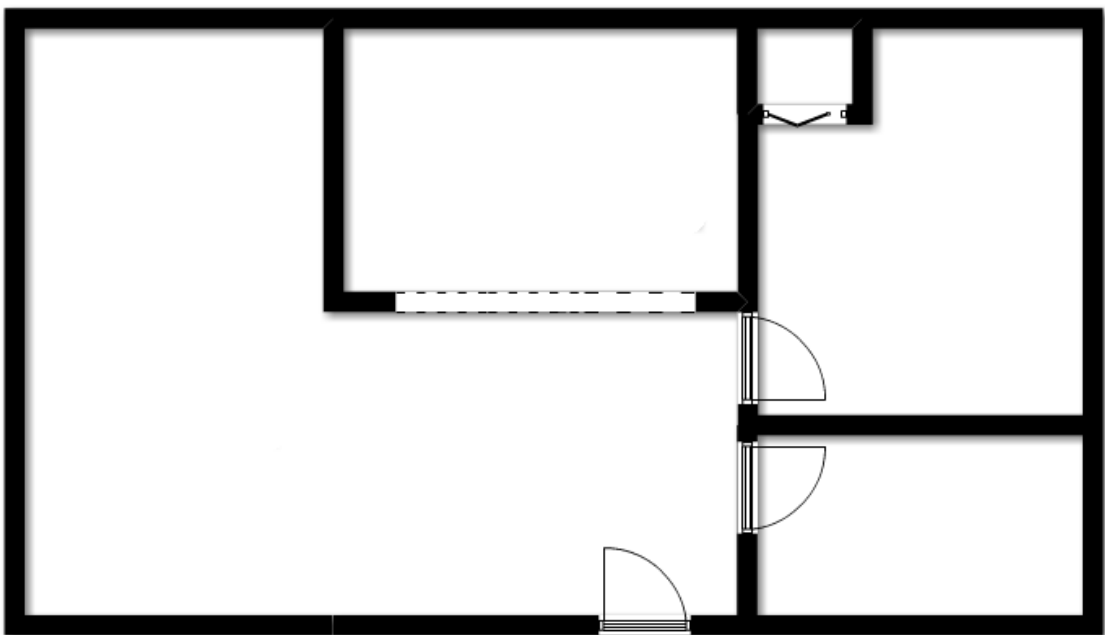
It's near / next to / beside / in front of / behind / between the...



- ② Listen to your partner. Draw the items in the correct places.

Where is the...?

Is it near / next to / beside / in front of / behind / between the...?

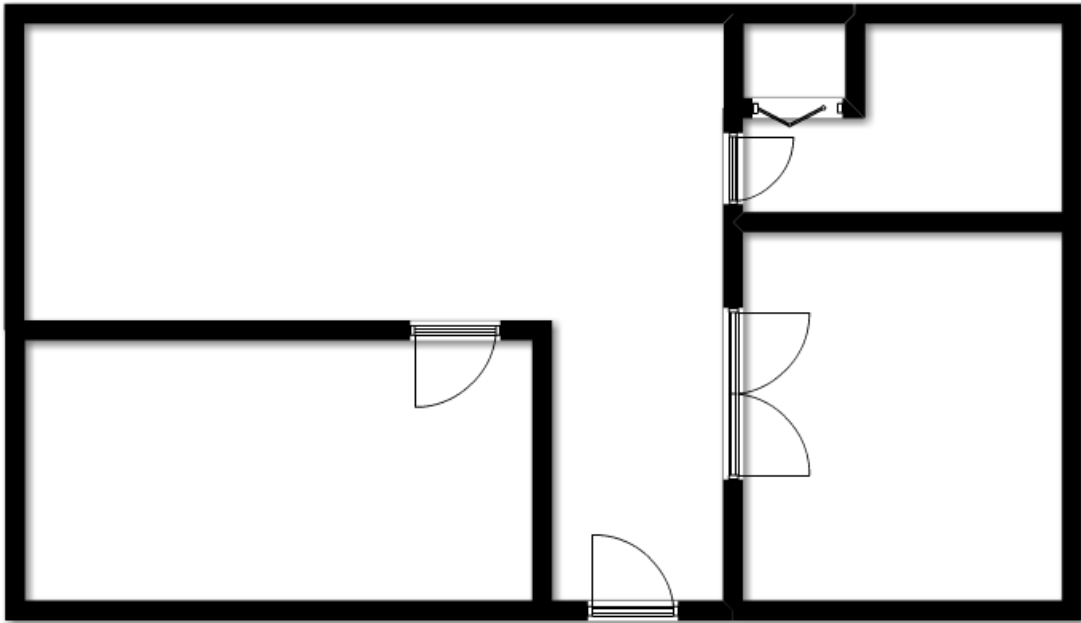


- ③ Which floor plan do you like better?

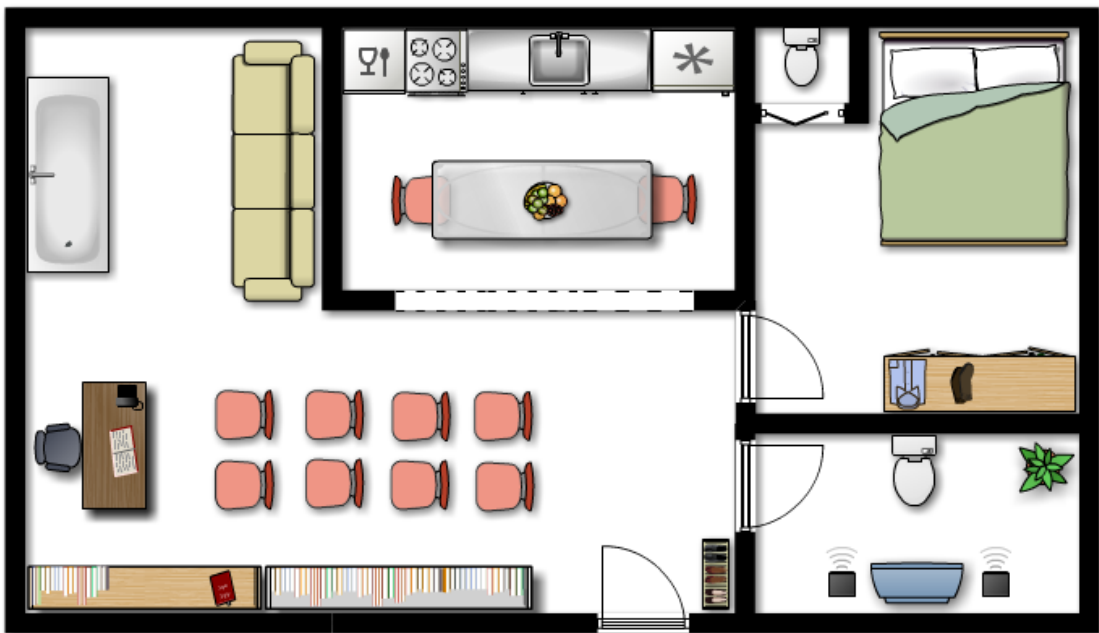
FLOOR PLANS

B

- ① Listen to your partner. Draw the items in the correct places.
Where is the...?
Is it near / next to / beside / in front of / behind / between the...?



- ② Describe your floor plan to your partner.
There is a/an...
There are some / one / two...
It's in the top right / top left / bottom right / bottom left corner.
It's along the top / bottom / left / right wall.
It's in the middle of the room.
It's near / next to / beside / in front of / behind / between the...



- ③ Which floor plan do you like better?